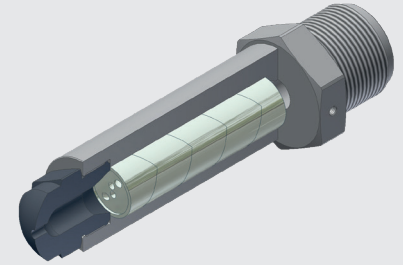
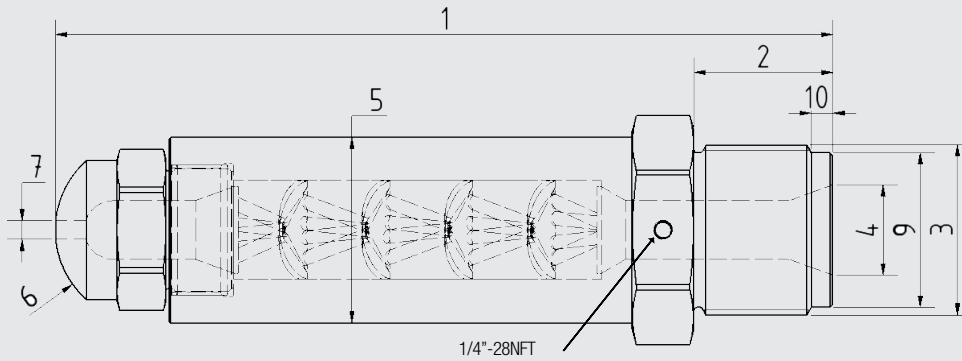


# MIXING NOZZLE - ISOMIX

## Order form



**Machine and Model**

**Injection rate**  
in cm<sup>3</sup>/s

**(1) Total length**

**(7) Opening (1.5, 2.5, 3, 4, ....)**

**(2) Thread Length**

**(8) Internal Design**

**(3) Thread Type**  
(M36x2 or 1"1/4-12UNF,...)

- Universal (GP)
- Polyamid (NRT)
- ABS (FT1)

**(4) Rear opening**

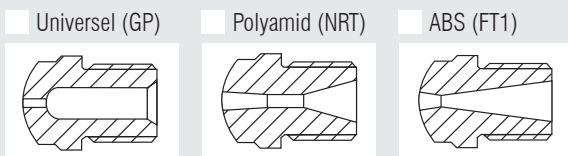
**(9) Ø relief**

**(5) Diameter**  
(25 mm, 38 mm, 50 mm)

**(10) Relief length**

**(6) Radius**  
(12,7mm, 15mm, 19mm, 35 mm...)

**(8) Type**



FT1 & NRT : Opening mini : 3mm

- Tip length**
- 38 mm (1)
  - 70 mm (2)
  - 95 mm (3)
  - 127 mm (4)

Length 70, 95 & 127mm are not available in ABS version

- (6) Radius**
- 35 mm
  - 30 mm
  - 19 mm
  - 15 mm
  - 12,7 mm
  - 10 mm
  - 9 mm
  - 120°
  - 90°
  - 70°
  - 60°
  - Other
- (7) Opening**
- 1,5 mm
  - 2 mm
  - 2,5 mm
  - 3 mm
  - 4 mm
  - 5 mm
  - 5,5 mm
  - 6 mm
  - 6,5 mm
  - 7 mm
  - 8 mm
  - 9,5 mm
  - Other

GP	1	R15	3
----	---	-----	---

Example: GP1-R15-1  
Universal type (GP) - Tip length 38mm (1) - Radius 15 mm - Opening 3 mm